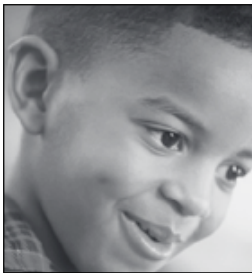


Oregon Parent Training and Information Center

2288 Liberty Street NE
Salem, Oregon 97301
503-581-8156 1-888-505-2673
Fax: 503-391-0429
HelpLine: 1-888-891-6784
www.orpti.org
info@orpti.org



educating and supporting parents, families and professionals in building partnerships that meet the needs of children and youth with the full range of disabilities, ages birth to twenty-six.

What is Oregon Parent Training and Information Center (OrPTI)?

Oregon PTI is the statewide parent training and information center serving parents of children with disabilities. Our goal is to educate and support parents, families and professionals in building partnerships that meet the needs of children and youth with the full range of disabilities, ages birth to twenty-six. We are a regionalized model with staff living in the area that they serve.

Who should call Oregon PTI?

- ▶ Parents of children with disabilities, or suspected disabilities
- ▶ Parents of children with emotional or behavioral problems
- ▶ Professionals in educational, medical, or human service fields

What services does Oregon PTI offer?

- ▶ Lending Library of videos and books
- ▶ Training on a variety of topics related to children with disabilities
- ▶ Information and referral
- ▶ Statewide conference
- ▶ Bimonthly newsletter
- ▶ IEP Partner Training and matching
- ▶ Transition Partner Training and matching
- ▶ Mediation Partner Training and matching
- ▶ Special Education HelpLine
- ▶ Diversity Outreach
- ▶ Monthly Email list of trainings in Oregon
- ▶ Oregon Ability, an online database

Where is Oregon PTI?

Oregon PTI's services are available throughout the state. We currently have Regional Trainers geographically dispersed throughout the state and our main office is located in Salem.

When is Oregon PTI open?

The Oregon PTI central office is generally open from 9 AM to 4 PM. Most of our staff work part time, and have obligations outside the office. There may be times when you will reach voicemail during our regular office hours. Our staff make every effort to return your call in a timely manner, usually within 24 hours.

How can I contact Oregon PTI?

- ▶ Call toll-free, in Oregon: 1-888-505-2673
- ▶ Call: 503-581-8156 (Salem)
- ▶ Fax: 503-391-0429
- ▶ Email: info@orpti.org
- ▶ Write to: 2288 Liberty Street NE, Salem, Oregon 97301

How can I help Oregon PTI?

- ▶ Volunteer in our Salem office
- ▶ Become a Volunteer Partner
- ▶ Make a tax-deductible charitable contribution
- ▶ Assist your Regional Trainer in setting up a training
- ▶ Donate items to our silent auction at the Annual Statewide Conference
- ▶ Coordinate a fund-raising activity in your community

Workshop topics include:

- ▶ IFSP/IEP Process
- ▶ Conflict/Dispute Resolution
- ▶ IDEA and Section 504 Laws
- ▶ Parent Rights and Responsibilities
- ▶ Early Intervention
- ▶ Parent/Professional Partnerships
- ▶ Disability Awareness
- ▶ EI/ECSE Transitions
- ▶ Transition from High School to Adult Life
- ▶ Age of Majority
- ▶ Statewide Assessments for Students with Disabilities

Partners Program

This program trains and matches Partners with parents wanting support at their child's meeting. Partners are parents and others who have gone through an intensive two-day training. Partners help parents prepare for the meeting, plan an agenda, identify issues, write



proposals, and attend the meeting as a trained listener knowledgeable about rules and regulations. Partners model parent/professional partnerships and collaboration.

Regional Trainers

Regional Trainers around the state work from home offices, serving regions comprised of multiple counties. Their priority is to offer a variety of quality trainings in the region that they cover. They also serve on a limited number of boards and committees to ensure that parent concerns are addressed. Our goal is to empower parents through our trainings and technical assistance, so that they can effectively advocate for their child.



Statewide Conference

The OrPTI Annual Statewide Conference brings together parents, educators, and health professionals in an atmosphere of cooperation and exploration. Issues covered relate to nurturing and advocating for children, youth and young adults with disabilities, with a positive focus on their abilities.

Secondary Transition Conference

Provides a forum for youth/young adults, families and other professionals to get together to share information, to plan together and to develop opportunities beyond high school.

Special Education HelpLine

Call toll-free (in Oregon) 1-888-891-6784, or Email: info@orpti.org for answers to questions related to special education topics, including:

- ▶ Behavior management and the IEP
- ▶ Disability-specific information
- ▶ Discipline for students with disabilities
- ▶ Early Childhood Special Education
- ▶ Early Intervention
- ▶ Eligibility for special education
- ▶ Extended School Year
- ▶ Evaluation for special education
- ▶ Family Education & Privacy Act (FERPA)
- ▶ Graduation
- ▶ Guardianship
- ▶ Home school for students with disabilities
- ▶ Individualized Education Programs (IEPs)
- ▶ Individualized Family Service Plans (IFSPs)
- ▶ Least Restrictive Environment
- ▶ Placement
- ▶ School Reform
- ▶ Section 504 of the Rehabilitation Act
- ▶ Statewide Assessments
- ▶ Technology and the IEP
- ▶ Transition

For more information about OrPTI, please complete the following information and return it to OrPTI.

Name: _____ Organization: _____
 Address: _____ City, State, Zip: _____
 County: _____ Email: _____
 Home Phone: _____ Work Phone: _____ Fax: _____
 I am a family member (birthdate of child: _____) person with a disability educator
 other _____
 Please send me information via US Mail via email
 Enclosed is \$25 for a newsletter subscription
 Please accept my tax-deductible contribution to support Oregon families:
 \$25 \$50 \$100 Other: _____